

// ABOVE IT ALL

Spring 22



// TRENDING UPWARDS

*Take your style to new heights
with our spring collection featuring the
hottest trends of the season.*





// ABOVE + BEYOND



// LEVEL UP



// FROM THE TOP



// DENIM UPGRADE



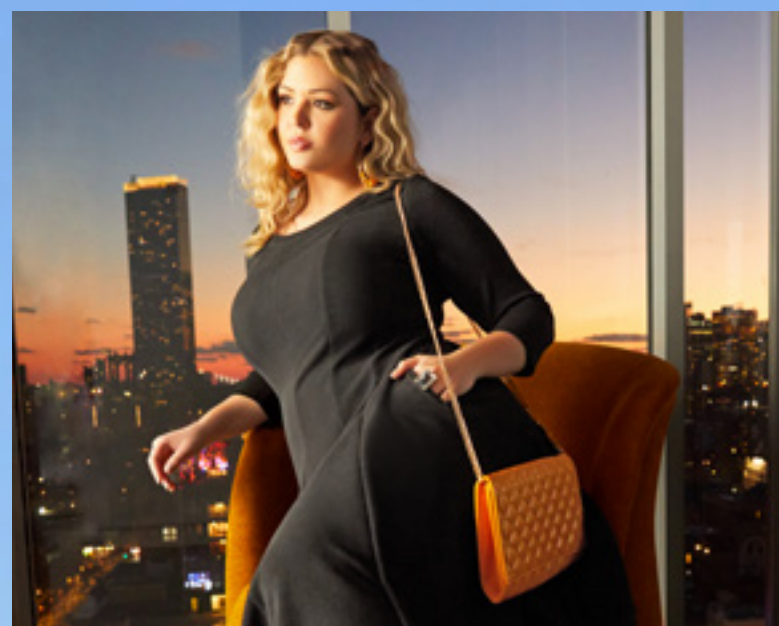
// ELEVATE YOUR JEANS



// DRESS OBSESSED



// CASUAL VIBES



// INTO THE NIGHT



// ONLINE EXCLUSIVES



// ABOVE + BEYOND

MILITARY INSPIRED

*Print, color, tailoring
and hardware all take a cue
from the troops.*



// LEVEL UP





LUXE
ATHLEISURE

*The tracksuit is reimagined
with unique prints and details.*



// FROM THE TOP



IN THE DETAILS

*Confident. Modern.
So You. These tops
bring the attitude
you deserve.*



A fashion advertisement featuring two women on a balcony with a city skyline in the background. The woman on the left has a black bob haircut and is wearing a white long-sleeved shirt with a light blue denim collar and cuffs, layered over a black denim vest. The woman on the right has long, straight brown hair and is wearing a white V-neck t-shirt under a dark blue denim jacket with frayed edges and a black belt with a silver buckle. Both women are wearing large hoop earrings and rings. The text "// DENIM REMIX" is centered in the lower half of the image.

// DENIM REMIX



WIN WIN

*You can't lose when you pair
these denim sets together.*



ELEVATE
YOUR JEANS



TOP PRIORITY

*Your denim deserves better.
Take it up a notch with
a showstopping top.*



// DRESS
OBSESSED





BOLD POV

Make an impression in the colors, prints and silhouettes of the moment.



A woman with long dark hair, wearing a blue denim shirt tied at the waist and a camouflage skirt with white rips, is sitting on a ledge. She is smiling and looking towards the camera. She is wearing large hoop earrings and a watch. The background shows a cityscape at dusk or dawn.

// CASUAL VIBES



A BREATH OF FRESH AIR

*Elevate the everyday
with new takes on your
favorite pieces.*



A woman with blonde, wavy hair is seated on a yellow chair, looking off to the side. She is wearing a black, long-sleeved, ribbed dress and a large, clear, square ring. A gold chain strap is visible across her shoulder, leading to a quilted, gold-colored bag. The background features a city skyline at night, with a prominent skyscraper illuminated against a dark sky. The overall mood is sophisticated and elegant.

// INTO THE NIGHT



**SKY
HIGH
STYLE**

*These dresses
transition from day
to night with ease.*